

Sundays in the Park

1 to 4 pm

September Dates: 15th, 22nd & 29th

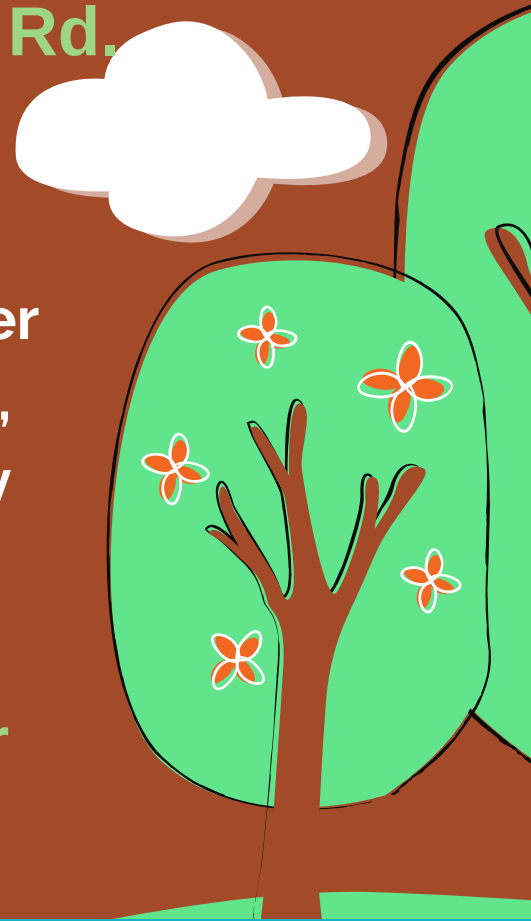
October Dates: 6th & 20th

Tookany Parkway

between Central Ave. & Beryl Rd.

On four Sundays Tookany Creek Parkway is closed to vehicles (weather permitting) so cyclists, in-line skaters, joggers, walkers and others can enjoy the roadway free from traffic.

NEW THIS YEAR: Inflatables for park patrons for a small fee



Vehicles are diverted from Tookany Creek Parkway but through traffic is allowed on Beryl Road